



# INSTALLATION INSTRUCTIONS

## Installation instructions for TJ-5321, TJ-5322 Rock Rails

**TJ-5321 fits 2004-2006 TJL (Unlimited)**

**TJ-5322 fits 1997- 2006 TJ (standard wheelbase)**

**\*\* Inspect all parts prior to installation. Contact us at 951-808-0750 for missing parts.**

### Hardware list:

#### TJ-5231:

- 12-6MM Allen Head bolts
- 12-6MM Flat washers
- 12-6MM Lock washers
- 6-6MM-25MM Flat washers(use on inside of Jeep)
- 12-6MM Nuts
- 4-10MM-50MM Carriage bolts
- 4-10MM Nuts
- 4-10MM Flat washers
- 4-10MM Lock washers
- 6-Flat spacers
- 4-Slotted inserts

#### TJ-5322:

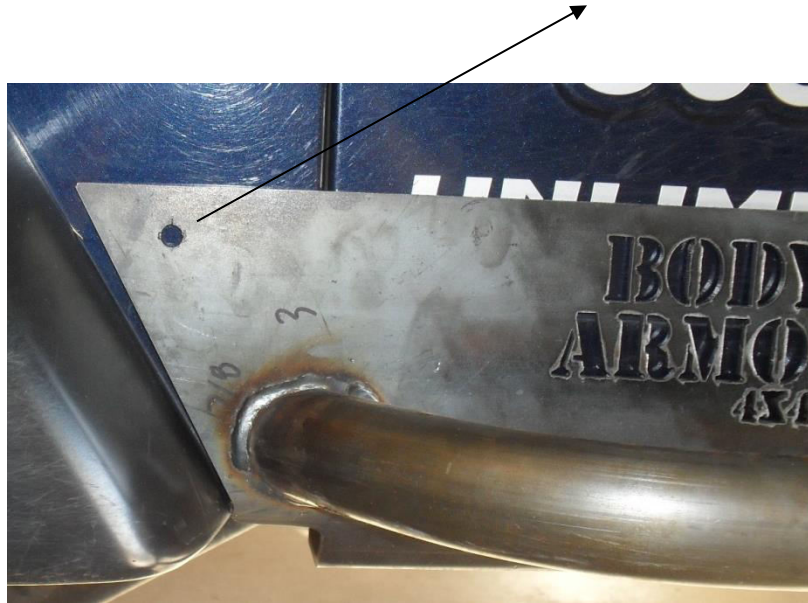
- 10-6MM Allen Head bolts
- 10-6MM Flat washers
- 10-6MM Lock washers
- 5-6MM-25MM Flat washers(use on inside of Jeep)
- 10-6MM Nuts
- 4-10MM-50MM Carriage bolts
- 4-10MM Nuts
- 4-10MM Flat washers
- 4-10MM Lock washers
- 6-Flat spacers
- 4-Slotted inserts

## Removing Factory Components'

- 1 There may be some factory installed components that need to be removed prior to installation. If you have any surface mounted parts mounted to the body between the fender flares they will have to be removed. This step will vary depending on the model you have.
- 2 Pre-fit the side rails on your vehicle to get a good understanding of the installation process. You may want to remove any decals that might be blocked by the side panel.
- 3 Clean the body of the vehicle that will be covered by the steel panel.

## Installing Rock Rails

- 1 Position Rock Rails on side of Jeep. Check all gaps, and mark hole to be drilled.

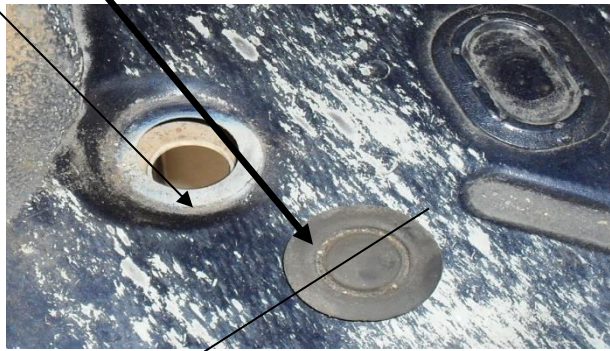


# INSTALLATION INSTRUCTIONS

- 2 After drilling all holes install mounting hardware for the under body mounting.



- 3 Remove floor drain plugs

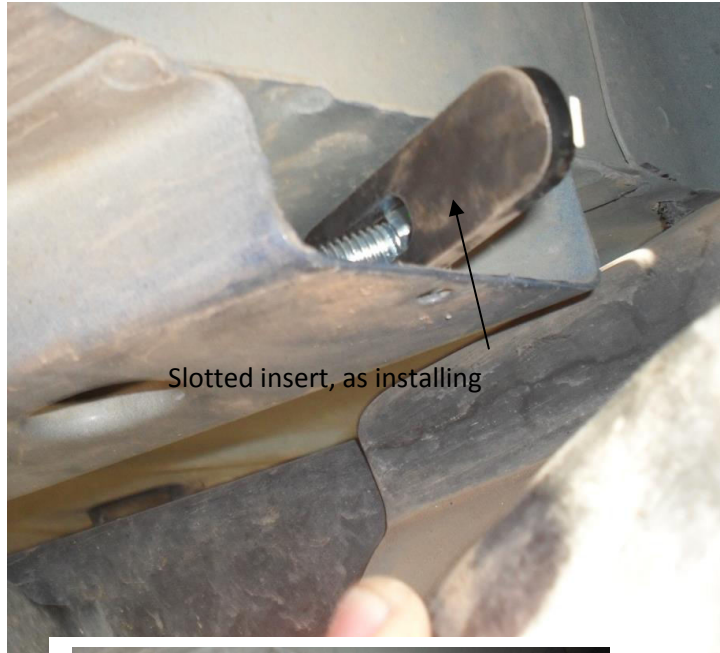


- 4 Install re  
needed.

(Use as round washers) as



- 5 For TJK models remove rear splash panel to access body channel. Insert slotted insert with Carriage bolt.





# INSTALLATION INSTRUCTIONS

6. Once all holes are drilled and carriage bolts installed you can install the side rail. Attach all hardware; keep loose until all hardware is installed. Once you have all the hardware installed you can start to tighten from the bottom first. Be Careful when tightening the 6MM bolts on the side of the vehicle, if over tightened you might distort the sheet metal of the vehicle.

**\*\*\* Body Armor products are warranted against manufacturer defect. Paint is warranted for 90 days from date of purchase. Rust is not considered a warranty issue because it is typically caused by environmental issues. Chips and scratches need to be touched up as soon as possible. Any quality flat black paint will work. This product has been painted in our dual process paint process, an E-Coat sub-coating plus a textured black powder coat. This dual process paint is highly corrosion resistant but not rust proof as the base material is steel. Proper maintenance of the paint will extend the life of the paint and the looks of your truck**

**\*\*\*\*Body Amor 4x4 does not warrantee against damage caused by abuse.**