



INSTALLATION INSTRUCTIONS

Installation instructions for JK Unlimited PN JK-4123 and JK 2 Door PN JK-4124 Rock Steps

**** Inspect Trail steps and all parts prior to installation. Contact us at 951-808-0750 for missing parts.**

Hardware list:

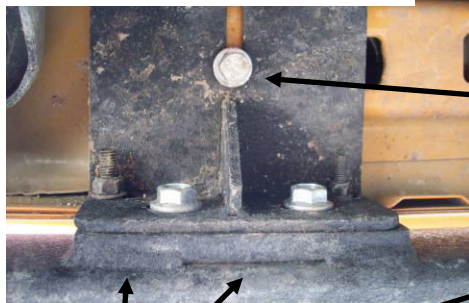
<u>Qty</u>	<u>Description</u>
2	6Mx30M Hex head bolt
8	10Mx30 Hex head bolt
8	8Mx30 Hex head bolt
4	6M flat washers
2	6M lock washers
2	6M nuts
6	8M nuts
14	8M flat washers
2	Front brackets (4 brackets on the JK-4124)
2	Rear brackets (none of these on the JK-4124)
4	"T" bolts

Installing Trail Steps:

We recommend you have help with lifting of the RockSteps to avoid injury or damage to RockSteps and vehicle.

- 1 If vehicle has factory steps, remove at this time.
- 2 Loosely attach step brackets to the pinch weld using M8 hex head bolts & 6M hex head bolts hardware. One 6M bolt and one 8M bolt will be used with the front brackets and 8M only on the rear brackets. On early model JK's you will need to insert the "T" bolts up into the body prior to installing the brackets. On late model (2012 and up) there are threaded inserts in these areas already. If this is the case use 8M hex bolt to attach the bracket to the body. ****Note:** the holes in the pinch weld may vary slightly, if this is the case you may need to enlarge the hole with a drill.

Front Bracket (Frt. & Rear JK-4124)



8MM
hex
bolts or
T-Bolt

Rear Brackets (JK-4123 only)



10M bolts attach
RockStep to
brackets



You may need to drill new holes in the bracket for the body mount bolt. This is on the 2012 and newer models, Jeep moved the body nut locations, this is on the 2 door only.

- 3 Once brackets are loosely in place it is time to install the step bar. Due to the length and weight of the bar we recommend that you have a helper lift the bar in place. Once in place attach the bar to the brackets with the 10M bolts, 4 on each side. Place one in the front bracket and one in the rear bracket first, and then install the second bolt in each. Once all bolts are attached begin to tighten all hardware. Start with the pinch-weld bolts, then body bolts, finish with the bolts attaching the bar.

You can add accessories for your RockSteps. Our 5123 Polyurethane step pads are available (shown in the image) There is also a new LED light kit available for the RockSteps, PN 5120-LED. Contact your local Body Armor 4x4 dealer for pricing.



INSTALLATION INSTRUCTIONS

Note: Recheck all hardware after the first couple hundred miles. It is advised to inspect the bumper and hardware periodically. **Do not return this product to the dealer if there is a question or concern about a possible defect, contact us directly and we will make every effort to resolve the issue as quickly as possible. 1-951-808-0750 or kneubauer@tolarmfg.com**** Body Armor warranty policy: Body Armor 4x4 warrants this product to be free from manufacturer defects for the life of the product. Damage to the product is not considered a defect; abuse of the product is not considered a defect. If fitment issues occur during the installation is not considered to be a defect, call our office to resolve fitment or installation questions. 951-808-0750. Body Armor 4x4 warranty's the paint for 90 days from date of purchase. Rust is not a warrantable defect as we cannot control proper maintenance of the product or environmental variables. We use the highest quality powder coat process as well as an E-Coat undercoating, this allows for the maximum corrosion resistance available. Proper maintenance is required to maintain the long term luster of the paint. Touch rock chips with a quality flat black spray paint or automotive touch up paint.