

## FRONT LEVELING SPACERS 07-UP TOYOTA TUNDRA 2WD

2	STRUT SPACER
8	M10-1.25 FLANGE NUT
2	3013 TB SWAY BAR SPACERS



PLEASE DOUBLE CHECK THE PARTS LIST BEFORE BEGINNING INSTALLATION, TO ENSURE ALL PARTS ARE PRESENT, IF THERE IS SOMETHING MISSING, PLEASE CONTACT BODY ARMOR 4X4 IMMEDIATELY (866) 894-3351 USA (877)326-0933 CANADA

READ THE INSTRUCTIONS THOROUGHLY AND COMPLETELY BEFORE BEGINNING THE INSTALLATION.

1. Factory service manual is recommended to have on hand.
2. Secure and properly block vehicle prior to beginning installation
3. Always wear safety glasses when using power tools or working under the vehicle
4. Modifications to any part will void the warranty associated with that product.

After removing parts from vehicle, save hardware for reinstallation

**IT IS RECOMMENDED THAT YOU HAVE YOUR VEHICLE'S ALIGNMENT CHECKED WHENEVER INSTALLING NEW SUSPENSION. IT IS ALSO RECOMMENDED THAT YOU ADJUST YOUR HEADLIGHTS WHENEVER YOUR VEHICLE'S RIDE HEIGHT IS ALTERED.**

**STEP 1:** Jack up the front of the truck and support under the frame rails with jack stands.

**STEP 2:** Disconnect the sway bar end link from the lower control arm by removing the mounting bolt.

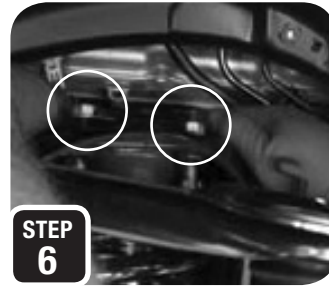
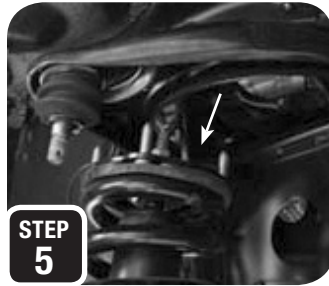
**STEP 3:** Loosen and remove the 4 nuts at the top of the strut and the single bolt at the bottom of the strut.

**STEP 4:** Remove the abs guide clip on the back side of the upper arm so that the line does not get damaged.



**STEP 4 :** Next, remove the clip at the upper ball joint nut, loosen the nut but do not remove, and break the ball joint loose by hitting the side of the spindle with a hammer. The nut will catch the spindle, then remove the nut (*never hit the ball joint on the threads*).

**STEP 5:** Pry down the lower control arm and remove the strut.



**STEP 8:** Place a floor jack under the lower control arm and jack up the truck to compress the coil. Now re-attach the upper control arm to the spindle, tighten the castle nut, and re-install the factory clip.

**STEP 9:** Loosen the bolts mounting the sway bar to the frame on both sides and install the provided spacers one at a time then tighten.



**STEP 6:** Attach the strut spacer to the top of the strut using the factory nuts and tighten (*the spacer will only fit one way*).

**STEP 7:** Line up the strut spacer in the frame and pry down on the lower control arm to get the strut back in its mounting pocket. Once in, install the bolt at the bottom and tighten, then install the provided nuts at the top and tighten.

**STEP 10:** It is easiest to re-attach the sway bar end link to the lower control arm when the truck is back on the ground, so put the wheels and tires back on, remove the jack stands, and lower the truck to the ground. Now re-attach the sway bar end link using the factory bolt and tighten.